

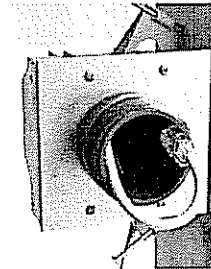
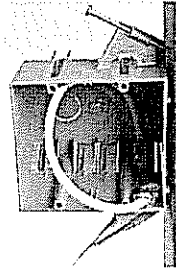
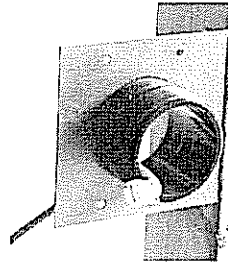
CONTROL ROUGH-IN INSTRUCTIONS

Mount the rough-in plate flush to the stud's surface,

either directly to a stud

or

to a double-switch box



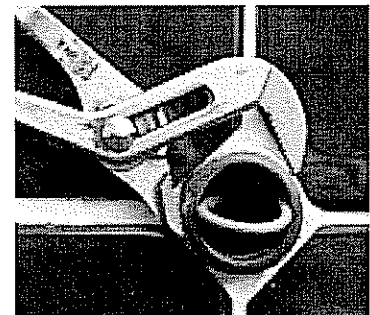
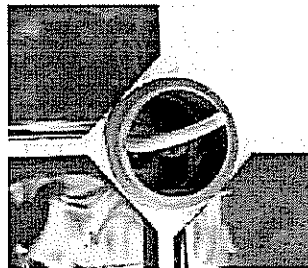
Throughout the following steps, make sure the control cable is kept accessible and protected from damage. It will be needed later to connect the control.

Cut a 2-3/8" diameter hole to match the rough-in plate and rough-in fitting

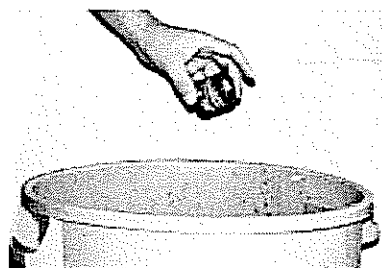


Tile or finish the wall surface up to the rough-in fitting

then remove the rough-in fitting

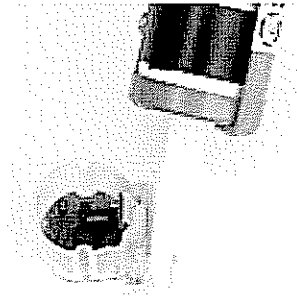


and throw it away.



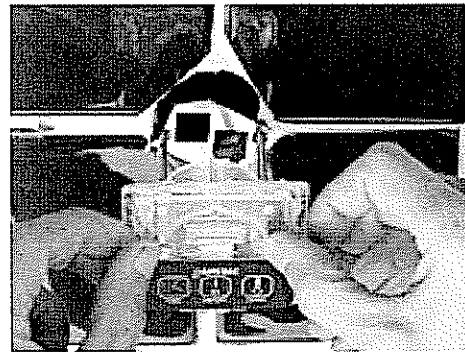
CONTROL ROUGH-IN INSTRUCTIONS

Run a bead of silicone around the back of the control



then use the 2 screws provided to add the retaining bracket to the back of the control.

Run the cable end through the bracket and plug it into the control



Push the bracket through the hole and push the control into the wall. Carefully align the control vertically and horizontally before inserting it into the hole.

Tighten the bracket screws until the control is pulled snugly against the wall. *Do not over tighten – this may damage the control and cause vapor leaks!*



Mount the decorative cover plate by first hanging it onto the top of the control housing then pushing the bottom of the plate until it clicks into place.

