

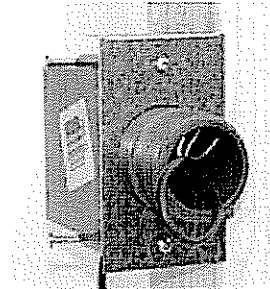
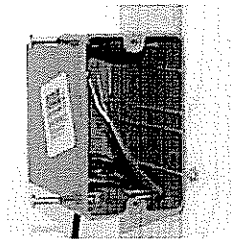
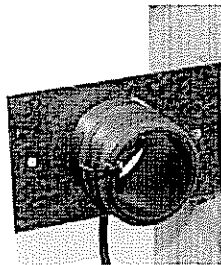
CONTROL ROUGH-IN INSTRUCTIONS

Mount the rough-in plate flush to the stud's surface,

either directly to a stud

or

to a single-switch box



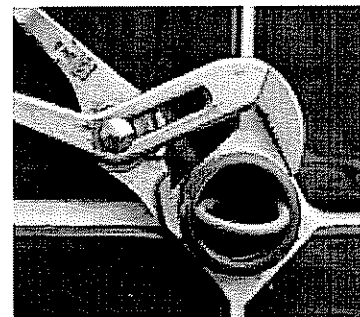
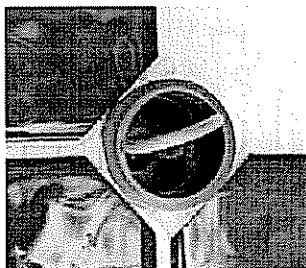
Throughout the following steps, make sure the control cable is kept accessible and protected from damage. It will be needed later to connect the control.

Cut a 1-7/8" diameter hole to match the rough-in plate and rough-in fitting

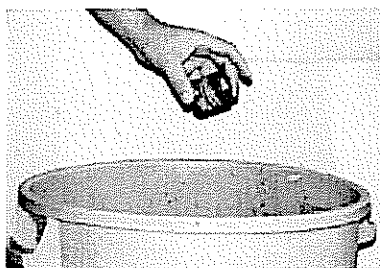


Tile or finish the wall surface up to the rough-in fitting

then remove the rough-in fitting

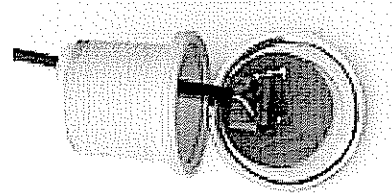


and throw it away.

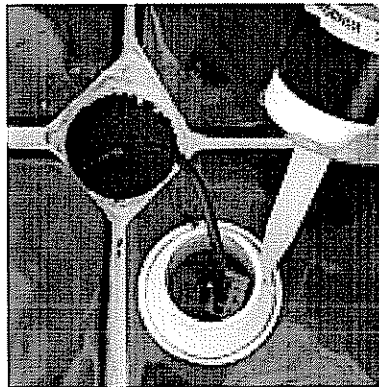


CONTROL ROUGH-IN INSTRUCTIONS

Connect the control cable to the switch. Use the cable's wire colors to match wire connections to the steam generator circuit board's terminal block. We recommend connecting the white wire to position 1 at each end, red to positions 2 and black to positions 3.



Run a bead of silicone around the back of the control



Clean the wall surface to ensure the silicone will adhere then place the control into the hole and tape in place until the silicone cures.

